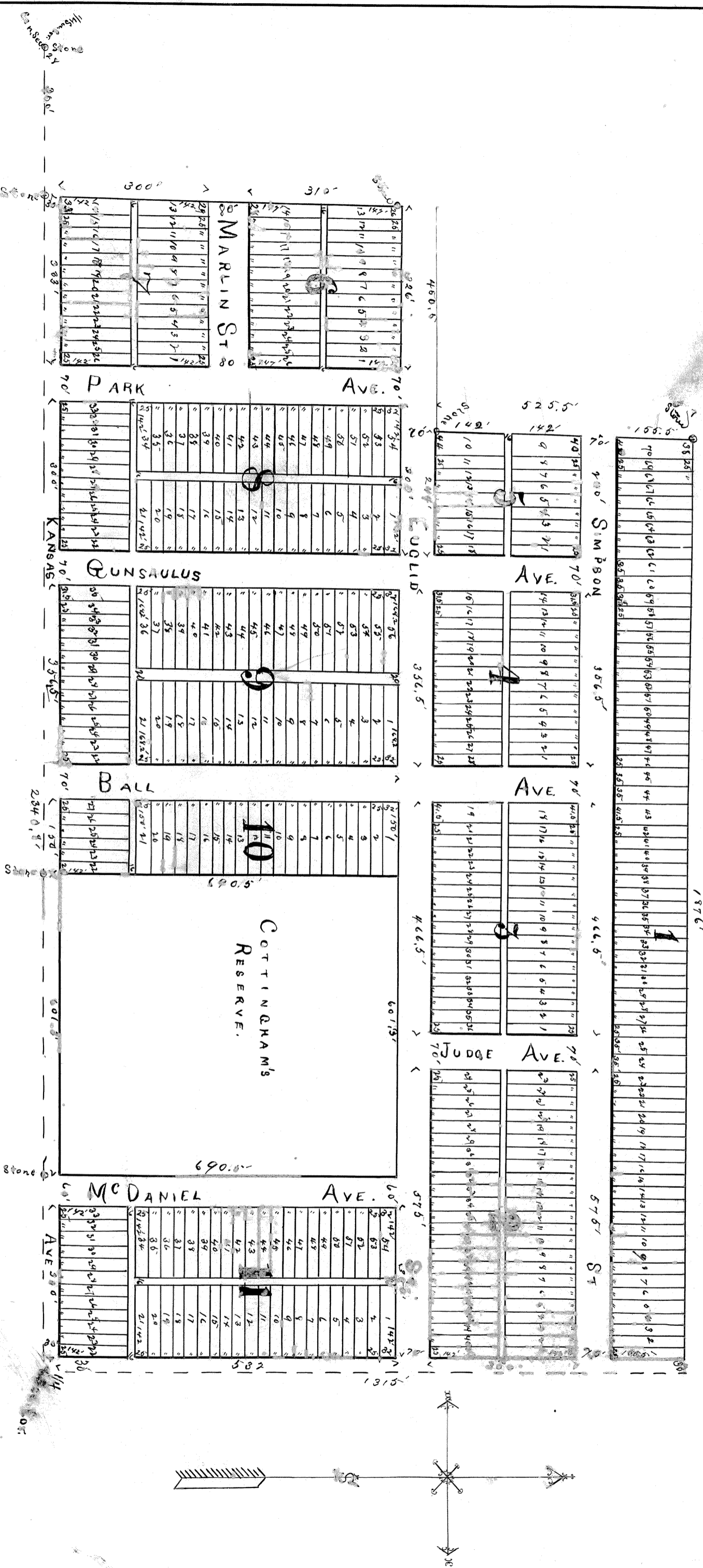


# BASS ADDITION TO McPHERSON, KANSAS

CORRECTED PLAT  
 TO  
 McPHERSON, KANSAS.



The Bass and Ivins Addition to McPherson, Kansas is located in the following described tract of land: Beginning at a stone situated on 1/4 Sec. line 300ft. east of Sec. center of Sec. 24, Twp. 19, Range 3 west of the 6<sup>th</sup> Principal Meridian, thence east on a 1/4 sec. line 1345.5ft. to a stone; thence north 120.5ft.; thence east 300ft. thence south 120.5ft. to a stone situated on 1/4 sec. line; thence east 300ft. to the 1/4 sec. corner between sections 21 and 24; thence north on section line 1315ft. to the 1/4 sec. corner; thence west on 1/4 sec. line 1946ft. to a stone; thence south 525.5ft. to a stone; thence west 485ft.; thence south 130ft. to the place of beginning. The same being a part of the south 1/2 of the north east 1/4 of Sec. 24, Twp. 19, Range 3 W. of the 6<sup>th</sup> Principal Meridian, and is divided into 13 blocks, lots, streets, avenues and alleys as shown by the foregoing plat. That portion of land indicated on plat as Cottingham's Reserve is not included in the addition.

I hereby certify that the foregoing plat and notes are correct and conform strictly to a survey made by me on the 25th day of March, A.D., 1897.

A. B. Davis

Be it remembered, That on this 12th day of April, A.D., 1897, before me a Notary Public in and for the State and County aforesaid, came M. L. Ivins, President of the Key Stone Investment Co., who is personally known to me to be the same person who executed the foregoing instrument of writing and such person has duly acknowledged the execution of the same as the act and deed of said company. In witness whereof I have hereunto set my hand and affixed my official seal this day and year last above mentioned.

A. B. Davis  
 Notary Public

Be it remembered, That the Key Stone Investment Company, a corporation duly organized and doing business under the laws of the State of Kansas is the owner of the tract of land upon which Bass and Ivins Addition to McPherson, Kansas is located as shown by the foregoing plat and notes and that the disposition of the same is in accordance with the design and instructions of the Board of Directors of said company. In witness whereof the Key Stone Investment Company has caused these presents to be signed by its President and attested by its Secretary this 28th day of March, A.D., 1897.

The Key Stone Investment Company  
 M. L. Ivins, President

For parts located see M-C-519 & 519  
 For vacation of part of Gunsaulus St. & parts of alleys see M-63/73  
 For vacation of part of Gunsaulus St. & parts of alleys see M-53/73

For vacation of Judge Ave. & Part of Ball Ave. & Gunsaulus Ave. & Alley in B17, 3 & 34 & 4 of Simpson St. see M-44/207

Note- This plat is filed to correct a clerical error in blocks 1 and 5, wherein there is a surplus of one lot in length to each of above blocks, also one corner in length of lots in block 5 as shown by plat of Bass & Ivins Addition to McPherson, Kansas filed originally filed

State of Kansas, }  
 McPherson Co. }  
 Be it remembered, That on this 12th day of April, A.D., 1897, before me a Notary Public in and for the State and County aforesaid, came M. L. Ivins, President of the Key Stone Investment Co., who is personally known to me to be the same person who executed the foregoing instrument of writing and such person has duly acknowledged the execution of the same as the act and deed of said company. In witness whereof I have hereunto set my hand and affixed my official seal this day and year last above mentioned.

A. B. Davis  
 Notary Public

STATE OF KANSAS  
 McPherson County, ss.  
 Entered on Transfer Record in my office  
 April 12, 1897  
 E. C. C. Cozart  
 COUNTY CLERK

W. A. Williams  
 by A. J. Suggs